

TIPS ON TALKS

The Ins and Outs of Visual Aids

Dr. Beth Ann Rivers

Begin With A Thought Experiment



Overview

- I. Word Slides
- II. Graphics
- III. Problematic Content
- IV. Prezi



Keep it Simple and Clean!

Word Slides Two Common Mistakes

- Fast Forward
- Too Many Words!

Too Wordy

Many people write down everything they want to say and then read it from the slide. The problem with this is that you can read faster than I can speak and will, therefore, finish well ahead of me. Now what? Minds wander, ... "Where shall we go for lunch? Did I remember to turn off the coffee pot?" And you've lost them.

Still too Wordy!

- Use short phrases
- Don't worry about grammar and punctuation
- Order major points appropriately
- Use word slides as note cards
- Use large font
- Use clean font
- Use special font features
- Simple background
- Spelling checker

Overview

- I. Word Slides
- II. Graphics
- III. Problematic Content
- IV. Prezi



Keep it Simple and Clean!

Grand Canyon 101 Vital Statistics

- 5,841ft deep (1,780 m)
- 277 mi long (443 km)
- 600 ft to 18 mi wide (0.2-29 km)

Backpacking In The Grand Canyon Factors to Consider

1. Water
2. Weather
3. Pack it in, pack it out!

Backpacking In The Grand Canyon Factors to Consider

1. **WATER!!!!!!!!!!**
2. Weather
3. Pack it in, pack it out!

Backpacking in the Grand Canyon Factors to Consider

1. Water
2. Weather
3. Water
4. Pack it in, pack it out!
5. Water
6. Water

When Long is Better

"I have a dream that one day this nation will rise up and live out the true meaning of its creeds: "We hold these truths to be self-evident, that all men are created equal."



Dr. Martin Luther King Jr.
28 August 1963

Word Slides: Design Hints

- Fonts
- Background

Design Hints

- Clean Font Arial (sans serif font)
Not this (Times New Roman)
Not This,.... Yikes!!

Design Hints

- Font Size 24 point minimum (this is 32)

This is 24 point

20 point, getting a bit small

18 point. Can you see this in the back of the room?

16 point. Be serious!!!

Design Hints

- **Use a simple background**

Grand Canyon Backpacking



- I. Intro to the Canyon
- II. Factors to Consider
- III. Route Planning & Permit Process

Recap: Word Slides

- Structuring the Information
- Bullet versus numbered lists
- Fonts and Background
- Add emphasis with extras (with care)

Final Comments on Words

- Edit, Edit, Edit!!!!
- Run the spelling checker

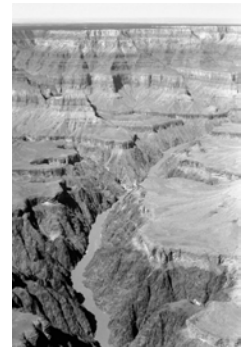
A Picture is Worth A
Thousand Words

Grand Canyon 101 Facts anzzzzzzzzzzzz

- 5,841ft deep (1,780 m)
- 277 mi long (443 km)
- 600 ft to 18 mi wide (0.2-29 km)

Grand Canyon 101

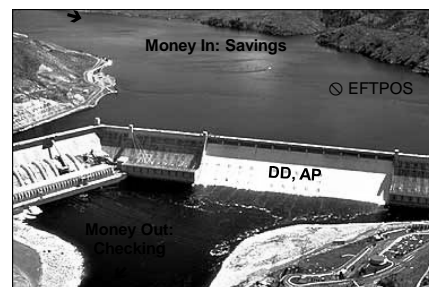
- 5,841ft deep (1,780 m)
- 277 mi long (443 km)
- 600 ft to 18 mi wide (0.2-29 km)



Money Management The Two-Account System

- Savings Account
 - Deposit paychecks
 - No EFTPOS
 - Direct Debit & Autopay Major Bills
- Checking Account

Pictures as Metaphor Money Management Advice



Grand Canyon 101

- 5,841ft deep (1,780 m)
- 277 mi long (443 km)
- 600 ft to 18 mi wide (0.2-29 km)

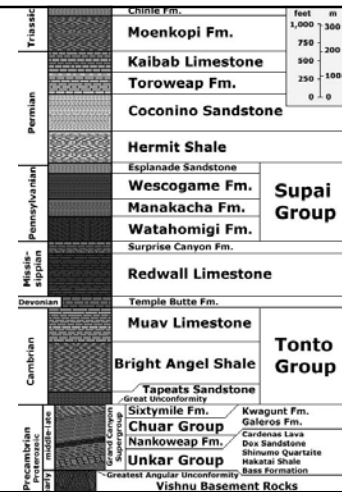
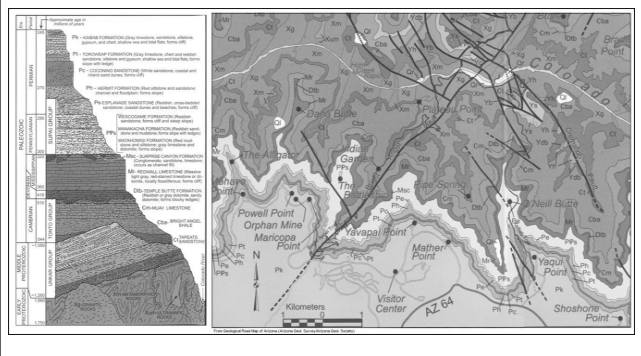


Grand Canyon 101

- 5,841ft deep (1,780 m)
- 277 mi long (443 km)
- 600 ft to 18 mi wide (0.2-29 km)



Grand Canyon Geology



Grand Canyon Geology



Adding Graphics Recap

- Relevant
- Balance
- Clean and Uncluttered: simple is better

Equations Yea or Nay?



Same Question for Data Tables

Lift Force & Sediment Transport

Discharge Equation

Q Discharge

V Velocity

Energy Equation

A Cross-sectional Area

E Energy

g Gravity

P Pressure

Mathematical Models, Statistical Studies

- What does it do?
- Why is it better?
- Assumptions?
- Limitations?

Reconfabulate the Fraztboffle

Old

- Assume a square chicken
- 2-D space
- Static

New

- Assume a spherical chicken
- 3-D space
- Dynamic

Mean Monthly Temperature Inner Canyon

| | | | | | | | | | | | | | | | | | | | | | |
|--|--|--|--|--|--|--|--|--|--|--|--|--|--|--|--|--|--|--|--|--|--|
| | | | | | | | | | | | | | | | | | | | | | |
| | | | | | | | | | | | | | | | | | | | | | |
| | | | | | | | | | | | | | | | | | | | | | |
| | | | | | | | | | | | | | | | | | | | | | |
| | | | | | | | | | | | | | | | | | | | | | |

Mean Monthly Temperature Inner Canyon

| | | | | | | | | | | | | | | | | | | | | | |
|--|---|---|---|--|--|--|--|--|--|----|----|----|--|--|--|--|--|--|---|---|--|
| | | | | | | | | | | | | | | | | | | | | | |
| | | | | | | | | | | | | | | | | | | | | | |
| | | | | | | | | | | | | | | | | | | | | | |
| | | | | | | | | | | 38 | 41 | 39 | | | | | | | | | |
| | 2 | 6 | 9 | | | | | | | | | | | | | | | | 8 | 2 | |

**Inner Canyon
Monthly Temperature**

PREZI

- <http://prezi.com>
- <http://prezi.com/yygoozaeqclw/learning/>