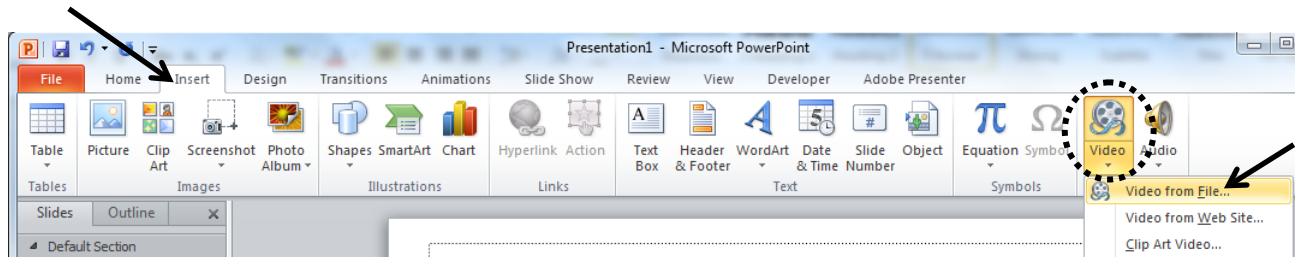


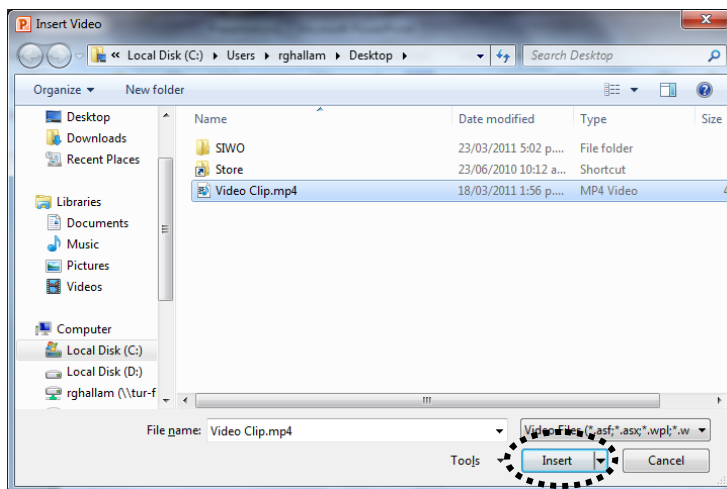
Videos

Several video / movie file formats work including AVI, MPG, MPEG, WMV and others.

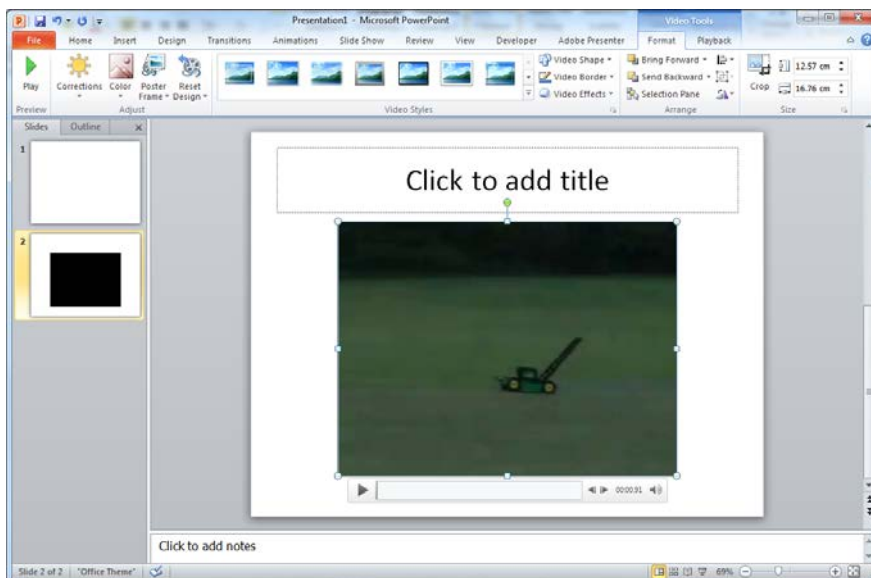
1. Select the slide that you wish to insert a movie onto
2. **Insert > Video > Video from file**



3. Browse to your movie file > Select it > Click **OK**



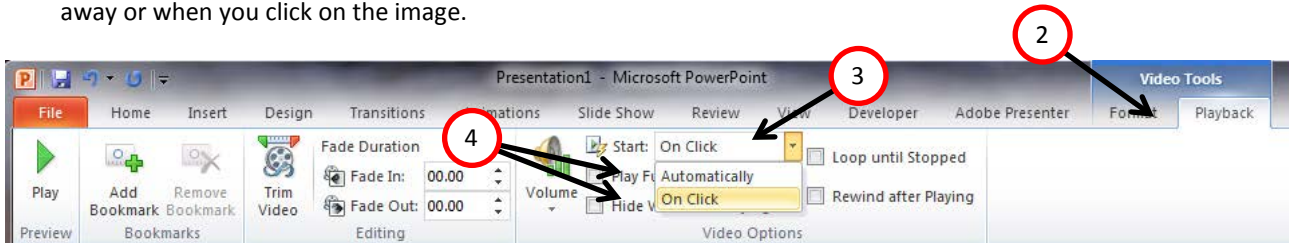
4. Done.



Changing the video start mode

1. Select the video
2. Click on Playback
3. Click on the start drop box
4. Choose from Automatically or On Click

Depending on whether you chose **Automatically** or **when clicked**, your movie clip will either start playing straight away or when you click on the image.



Tip: Show Slide show

Press F5 to view as slide show.

